



# Viveza™ Lesson

## User Interface

Learn to quickly and efficiently navigate the Viveza interface



# Viveza™ Lesson

## User Interface

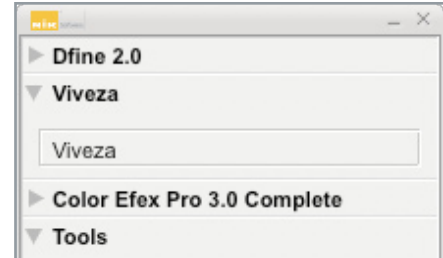
To apply Viveza, click on Viveza in the Selective Tool (*fig. 1*) or click on the Filter menu, then rollover Nik Software and click on Viveza. This will launch the Viveza interface.

In the top left-hand side of the interface, the View tools (*fig. 2*) allow for viewing the before and after Image Preview in different ways. There is the Single Image view which will show the image's preview with the enhancement applied. The Split-preview will display the image with a red line splitting the preview (*fig. 3*). On the left side of the red line will be the preview before the enhancement and on the right will be the preview after the enhancement. The Side-by-side preview will show two separate previews of the image; the left (or top) image will be the image before the enhancement and the right (or bottom) will be the image after the enhancement (*fig. 4*).

The Preview checkbox (*fig. 5*) will toggle on/off the enhancement made by Viveza when in the Single Image view.

In the top right-hand side of the interface are the basic tools within Viveza (*fig. 6*). There is the Select tool for selecting Control Points, the Zoom tool for zooming in and out to the Zoom to fit view, the 100% view, and the 300% view, the Pan tool for navigating the image when zoomed in to 100% or 300%, and the Background Selector which will toggle the background color between light grey, medium grey, and dark grey.

The Control Point Controls area is on the right-hand side of the interface and in this area are the Add Control Point button (*fig. 7*), the Control Point List, and the Details section. The Add Control Point button will enable you to place a Control Point on your image to control the light and color. Simply click on the Add Control Point button and then



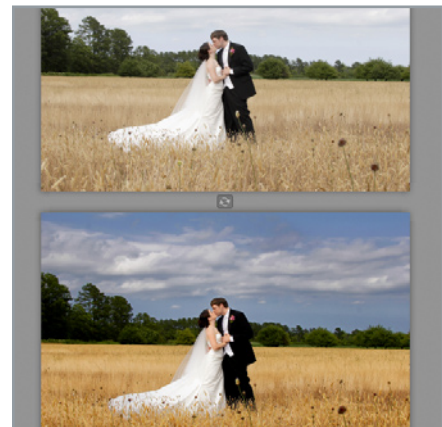
(figure 1) Selective Tool



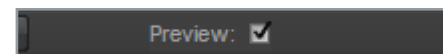
(figure 2) View Tools



(figure 3) Split-Preview



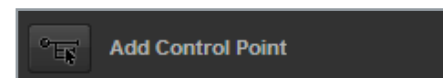
(figure 4) Side-by-Side



(figure 5) Preview Checkbox



(figure 6) Basic Tools



(figure 7) Add Control Point Button

# Viveza™ Lesson

## User Interface

click on the object or area of the image that you would like to enhance.

The Control Point List will contain basic information about the Control Points added to your image. In the Control Point List area you can show the preview for each individual Control Point (*fig. 8a*), view the radius of the Size slider (*fig. 8b*), and show the selection mask of each individual Control Point (*fig. 8c*).

The Details section (*fig. 9*) will show the detailed information about the Control Point(s) selected. It will display the current slider set used on the Control Point (BCS/All), the slider values, a Color Picker Patch and a Reset button which will reset the selected Control Point(s)'s sliders back to the default values.

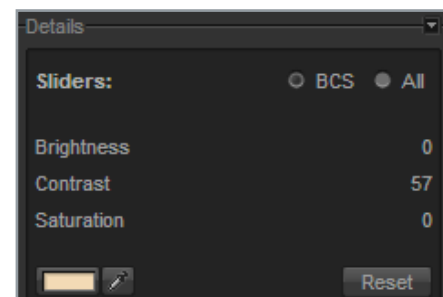
Just below the Details section there are Duplicate and Delete buttons for an efficient workflow (*fig. 10*).

In the bottom right corner of the interface there is the Navigator Loupe tool. When your image is in the Zoom to Fit mode, the Loupe will show a 100% view of the image that follows your cursor (*fig. 11*). When your image is in the 100% or 300% view, the Navigator will show a thumbnail of the image allowing you to quickly and easily navigate to a specific area of the image (*fig. 12*).

In the bottom left corner of the interface are the Help and Settings buttons (*fig. 13*). The Help button will open up your Internet browser and load the Help files for Viveza. The Settings button allows you to control the default look and functions of Viveza. In the Settings, you can change the default view, the default background color and some of the default functions of the Color Control Points in Viveza.



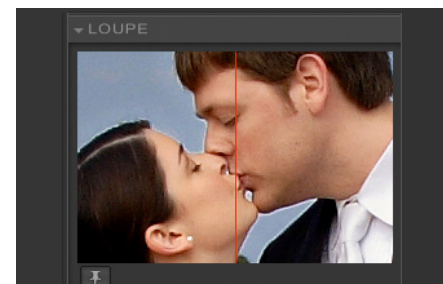
(figure 8 a, b, c) Control Point List



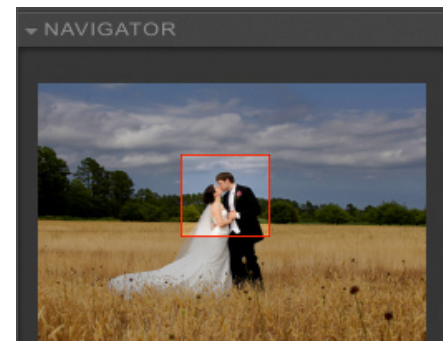
(figure 9) Details



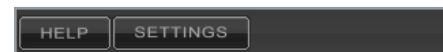
(figure 10) Duplicate and Delete



(figure 11) Loupe



(figure 12) Navigator



(figure 13) Help and Settings

# Viveza™ Lesson

## User Interface

---

In the bottom right corner of the interface are the Brush, Cancel and OK buttons (*fig. 14*) which will cancel or apply the application of Viveza. Clicking the Brush button will create a new layer with a layer mask enabling you to paint, fill, erase or clear the effect onto the image. Clicking the Cancel button will exit out of the Viveza interface and no enhancements will be applied and clicking the OK button will apply the current Viveza enhancement to the image.

Viveza is a quick, easy and powerful tool to control the color and light of your photographs without the need for complicated selections or layer masks and the intuitive interface design enables an even faster more efficient workflow.



(figure 14)

Brush, Cancel and OK