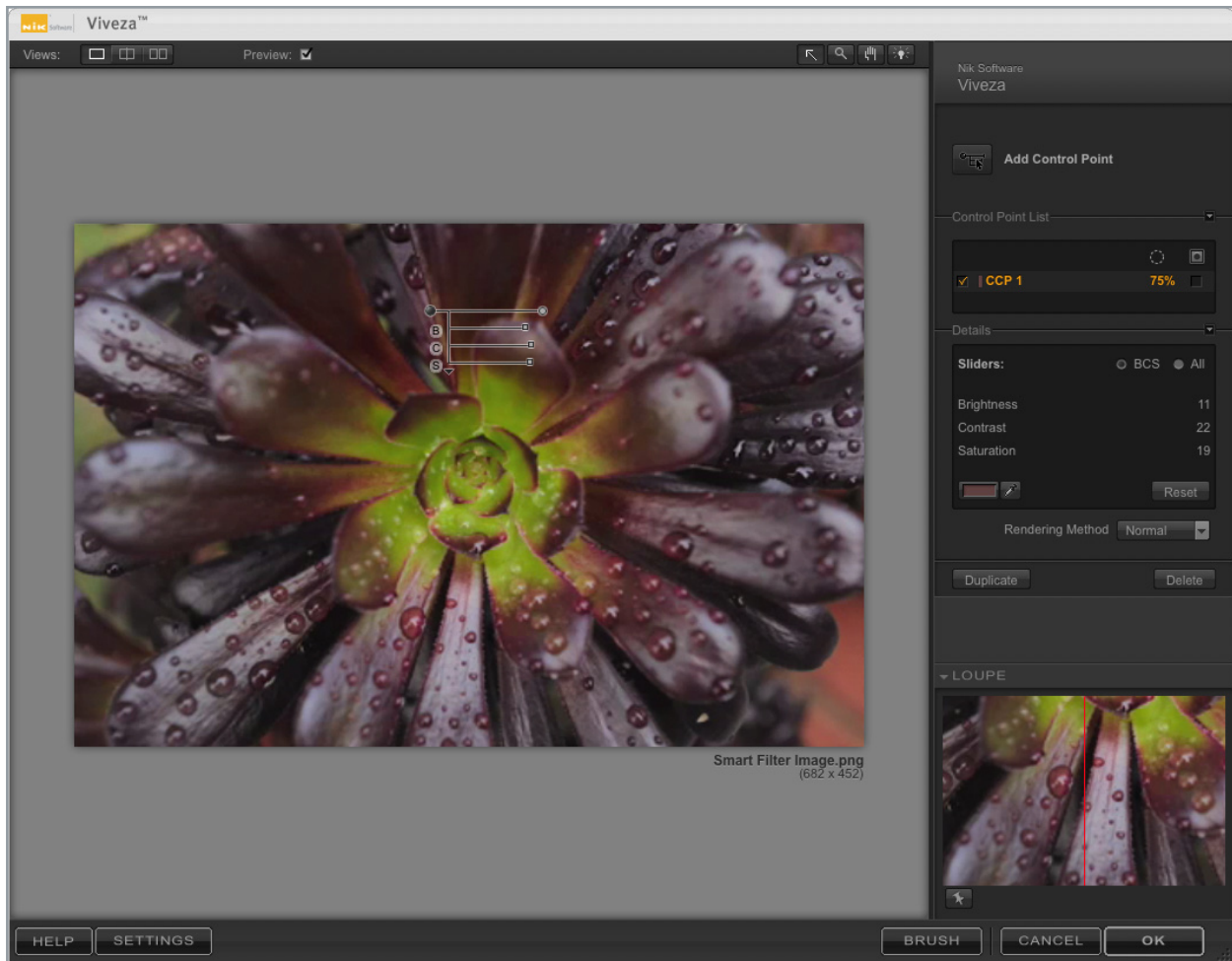




# Viveza™ Lesson

## Smart Filter Compatibility

Use Viveza in a truly non-destructive manner by using it as a Smart Filter



# Viveza™ Lesson

## Smart Filter Compatibility

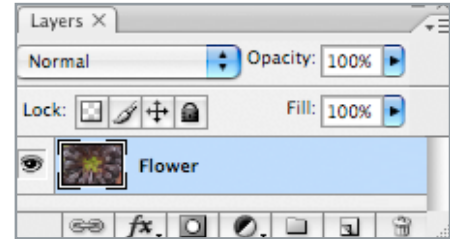
Viveza can be used as a Smart Filter when used inside Adobe Photoshop CS 3. Using Viveza as a Smart Filter with Smart Objects inside Adobe Photoshop CS 3 will enable true non-destructive editing and also allow you to go back and change the Control Point adjustments that you made at any time. To use Viveza as a Smart Filter, follow the steps below.

1. Open an image in Adobe Photoshop CS 3\*.
2. Select the layer in the Layers palette that you would like to apply Viveza to (*fig. 1*).
3. Go to the **Filter** menu, and select **Convert for Smart Filters** (*fig. 2*). Your layer will appear with a new icon in the Layers palette (*fig. 3*) and you can now apply Smart Filters to that layer.
4. Go to the Filter menu, rollover Nik Software, and select Viveza (*fig. 4*).

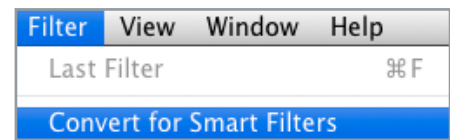
\*Smart Filter functionality is only available with Adobe Photoshop CS 3 as the host for Viveza.

Viveza will launch, make your adjustments using the Color Control Points, and when you click OK (*fig. 5*) Viveza will be applied as a Smart Filter in the Layers palette (*fig. 6*). To go back and adjust Control Points inside Viveza, just double-click on the Viveza sub-item in the Layers palette (*fig. 7*) and Viveza will relaunch with all of the Color Control Points locations and adjustment information reloaded for you.

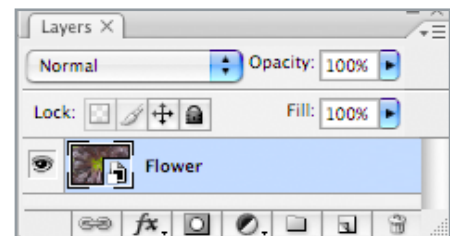
**Note:** To maintain Viveza as a Smart Filter, the file must be saved as a PSD or TIFF with layers.



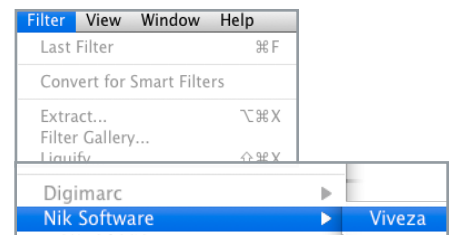
(figure 1) Layers Palette



(figure 2) Convert For Smart Filters



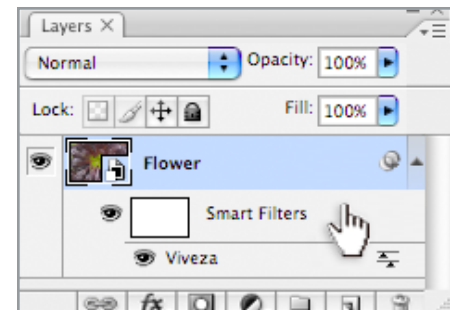
(figure 3) Layer with Smart Filter Icon



(figure 4) Filter Menu



(figure 5) OK



(figure 6 & 7) Viveza as a Smart Filter