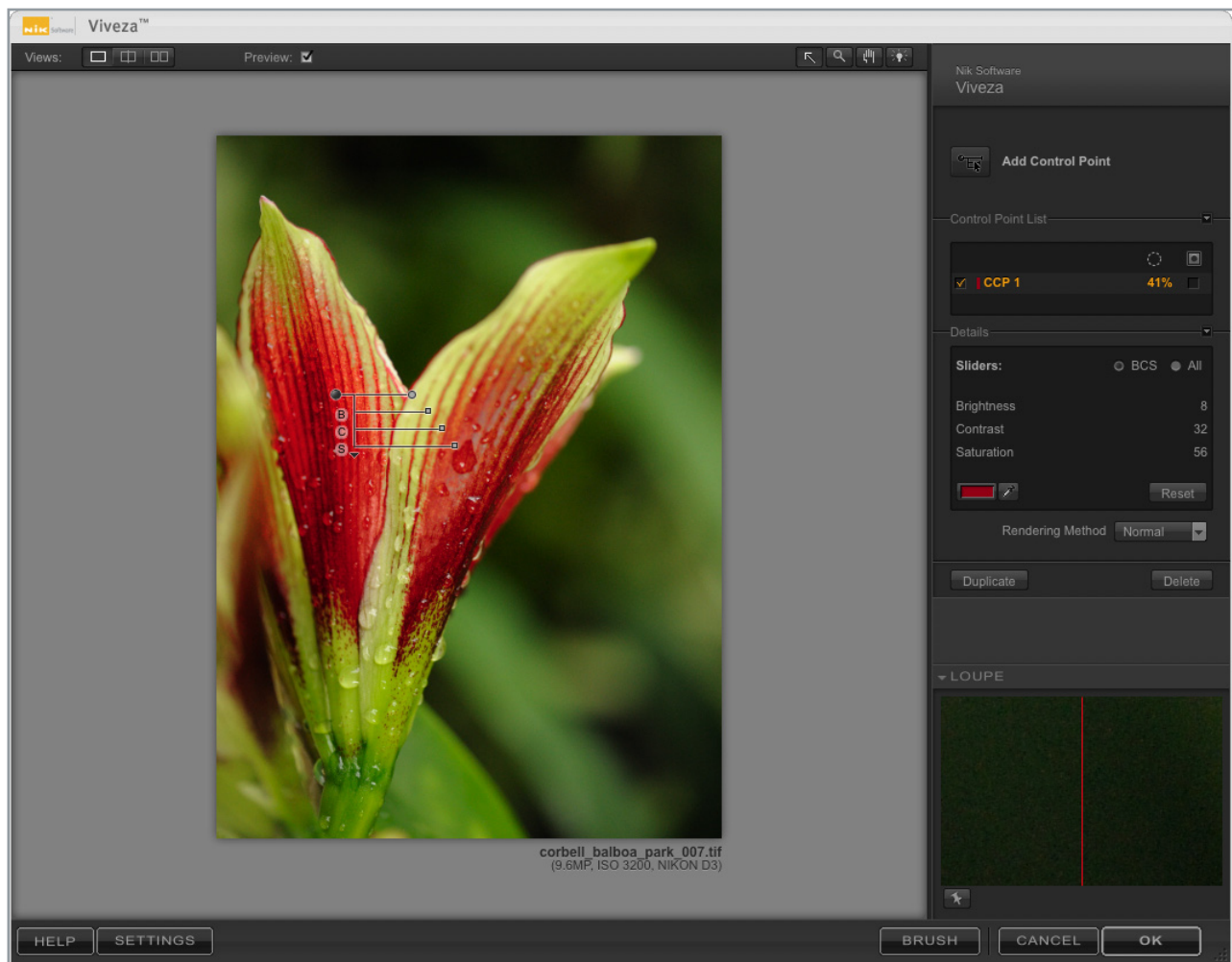




Viveza™ Lesson

Precise Selections & Enhancements

Make Precise Selections with U Point® powered Color Control Points



Viveza™ Lesson

Precise Selections & Enhancements

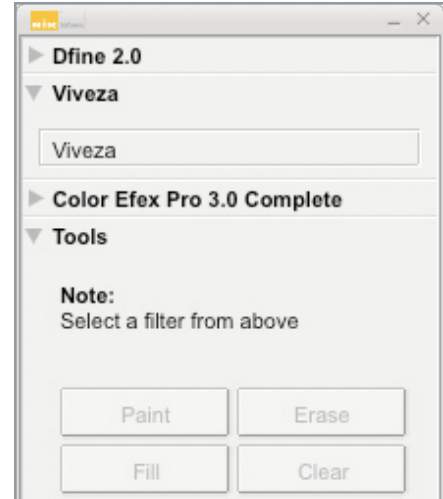
To apply Viveza, click on Viveza in the Selective Tool (*fig. 1*) or click on the Filter menu, then rollover Nik Software and click on Viveza. This will launch the Viveza interface.

Viveza allows you to make precise selections and enhancements with U Point powered Color Control Points. To make an enhancement, click the Add Color Control Point button (*fig. 2*) and then click on the object you wish to enhance. This will place a Color Control Point on the object (*fig. 3*) and the Color Control Point will have four sliders available. The four sliders available are Size, Brightness, Contrast and Saturation (*fig. 4*).

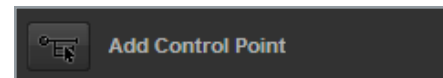
The Size slider will determine the area that the Control Point will affect; increasing the Size slider will apply the Control Point's enhancement to similar objects that are further away and decreasing the Size slider will apply the Control Point's enhancement to only a very local part of the object.

When you adjust the Size slider, hold down the Ctrl/Command key on your keyboard and a view of the Control Point's selection will be displayed as you adjust the Size slider.

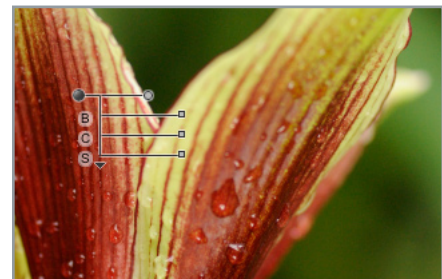
The mask view of the Control Point selection can also be shown by turning on the Show Selection checkbox which is located in the Control Point List area (*fig. 5*). You can review the selection of the Control Point by turning on the Show Selection checkbox. This will also allow you to refine the selection until you have achieved the desired selection for an object.



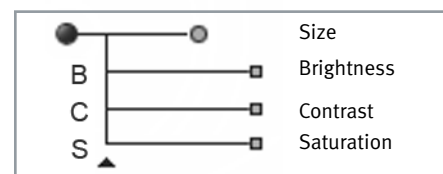
(figure 1) Selective Tool



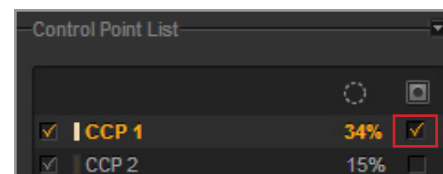
(figure 2) Add Control Point



(figure 3) Place Color Control Point



(figure 4) Color Control Point



(figure 5) Mask View

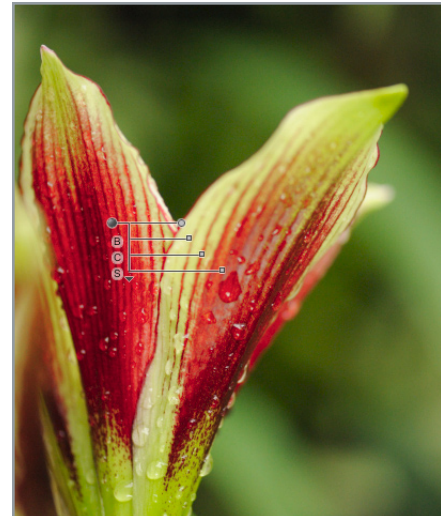
Viveza™ Lesson

Precise Selections & Enhancements

In Figure 6, you can see that we placed a Control Point on the red part of the flower, and in Figure 7 you can see the selection we were able to make on the red parts of the flower with just that one Control Point. The Control Point made a very precise and natural selection, automatically blending the selection where needed and also maintaining hard edges also when needed.

Once you have used the Control Point to select an object, adjust the Brightness, Contrast and Saturation sliders to suit your needs. To refine the selection of a Color Control Point, place another Color Control Point on an object that you don't want to enhance. When multiple Control Points are placed in an image, they communicate with each other to further define their selections.

Viveza can make precise and natural selections with U Point powered Control Points quickly and easily without ever using a selection tool or layer mask.



(figure 6)

Color Control Point



(figure 7)

Control Point Selection