

## Nik Sharpener Pro™ 2.0 Lesson

### Selective Tool

Using Nik Sharpener Pro 2.0 Selective Tool to “Paint” Sharpening onto your image



Before



After



## Selective Tool

Using the Nik Sharpener 2.0 Selective Tool to “Paint” Sharpening onto your image

1. Launch Adobe® Photoshop® (or any other Adobe Photoshop plug-in compatible image editing application) and open the desired image to be sharpened.
2. The Nik Sharpener Pro 2.0 Selective Tool palette should automatically appear when Photoshop is launched. (See Figure 1)

If the Selective Tool does not automatically appear on your desktop, you may launch it by selecting **File > Automate > Nik Sharpener Pro 2.0 Selective**.

Prior to selecting a filter from the Selective Tool palette, click the Settings button located in the mid-right area of the Selective Tool palette. The Sharpener Pro 2.0 Settings menu will appear as shown. (See Figure 2)

*Ensure that “Keep As Layer” box is checked.*

*Check the “Launch with Photoshop” option if you would like the Selective Tool to appear whenever you launch Photoshop.*

*If desired, you may also uncheck any print devices that you do not plan to utilize and they will be removed from the list of available filter devices in the Selective Tool palette.*

*Click **OK** to close the Settings menu.*

3. Click the appropriate filter from the Selective Tool palette based upon intended print device. For this example we



Figure 1: Selective Tool

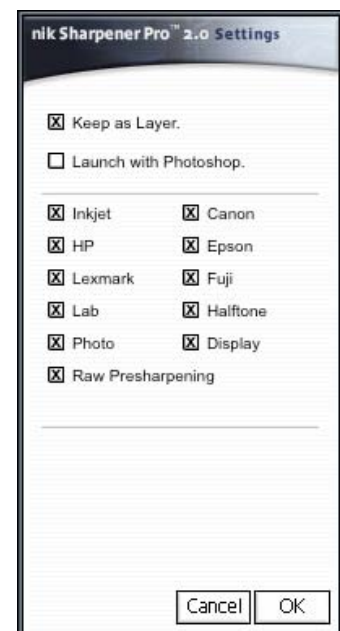


Figure 2: Settings Menu

# Selective Tool

have selected **Inkjet: Epson**. The Nik Sharpener Pro 2.0 **Inkjet: Epson** preview window will open displaying the Basic menu options and desired Image within the preview area. (See Figure 3)

a. Image Width and Image Height are automatically set by the software, based on the dimensions specified in the image file. **As your file should already be set at the size and resolution necessary for printing, we recommend you leave these values at their default settings.** These sliders do not actually change the size of your image. Any change to this setting simply modifies the sharpening setting to take into consideration the intended size of the final image, in case you intend to resize your image after sharpening (such as when you use the printer dialog box to set the print size).

b. **Viewing Distance** may be left at Auto, which sets the optimum viewing distance for the image based upon the size equal to the diagonal of the image. To view the Auto Distance value as determined by the software, click the **Show More** option located in the lower left corner of the preview window. (See Figure 4) The “Current Viewing Distance” is displayed in the right column, along with the image size.

4. Click and slide the **Paper Type** slider icon to select the appropriate paper type that will be used. The slider within the Inkjet series of filters offers the following six options: Texture & Fine Art, Canvas, Plain Paper, Matte, Luster and Glossy.

5. Click and slide the **Printer Resolution** slider icon to select the printer resolution you intend to use for printing your image. There are five preset resolutions and two additional user-defined resolutions that may be set using the **Settings** menu. (See Figure 5)



Figure 3: Preview Window



Figure 4: Show More

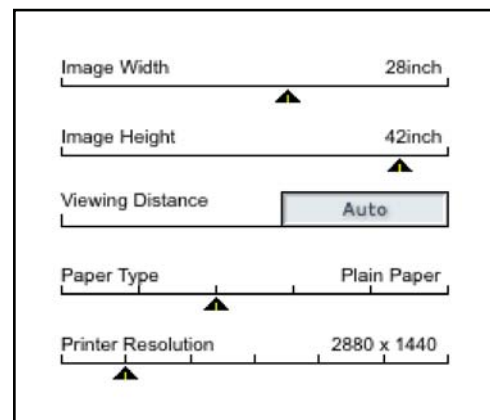


Figure 5: Printer Resolution

# Selective Tool

6. Once you have made your personal or default selections, click **OK**. The image should then be displayed without the sharpening effects (which have not yet been applied.)

7. Click the **Fill** button located in the middle right area of the Sharpener Pro 2.0 Selective Tool. (See Figure 6) The Sharpener Pro 2.0 filter effects will be applied to the entire image.

8. If you would like to remove the sharpening effect from any area of the image, click the **Erase** button to erase the effect from any user-selected areas. Conversely, if you would like to sharpen certain areas only, you may also use the **Paint** option instead of **Fill** and selectively “paint” the sharpening effects on the image. (See Figure 7)

9. If at any time, you would like to start over without losing the saved effects, simply click the **Clear** button and begin again with either **Fill** or **Paint**. You can also adjust the sharpening amount by using the **Opacity** slider in the Photoshop **Layers Palette**.

10. Once the final sharpening has been completed on the image, click on **Apply** in the lower right corner of the Selective Tool Palette before saving the image.

(See Figure 8)

*Note: It is recommended to use the “Save As” option and name the newly sharpened image with an indicator of the appropriate print device for which it was sharpened.*

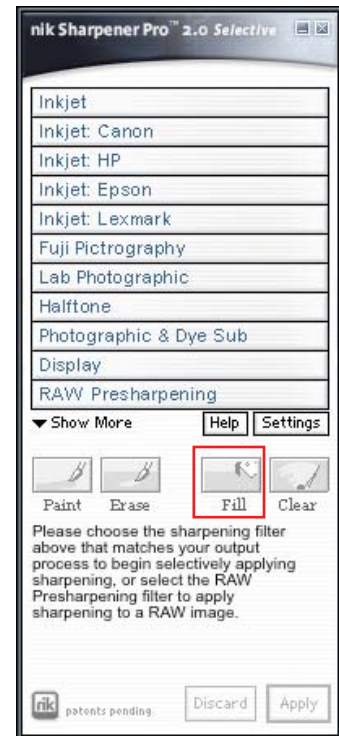


Figure 6: Sharpener Pro 2.0 Selective Tool



Figure 7: Sharpener Pro 2.0 Selective Tools



Figure 8: Apply button