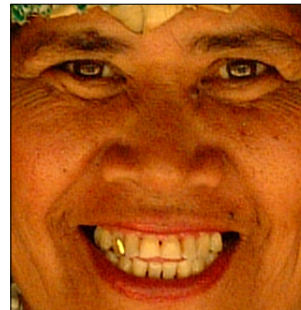




Dfine® 1.0 Lesson

Selectively Reducing Noise in an Image

Applying Noise Reduction to Enhance Digital Photography



Before



After

Selectively Reducing Noise in an Image

Applying Noise Reduction to Enhance Digital Photography

At Nik Software we highly recommend the application of noise reduction as the first step in your image editing workflow. This ensures optimum image quality.



Figure 1: Original Image

1. Launch Adobe Photoshop (or other Adobe Photoshop plug-in compatible image editing application) and open an image to enhance. For this lesson we will use a vacation image taken in Hawaii. (See Figure 1)

2. Click on **File>Automate>Dfine Selective...** Then select the **Skin** button. As the software processes the image, a new layer is automatically opened and a layer mask is inserted. The cursor then automatically becomes a brush tool. (See Figure 2)

3. After clicking on **Skin**, adjust the size of the brush necessary to easily cover the area to be “painted” with noise reduction. Paint the skin on the face of the woman in the middle then, apply the same noise reduction on the faces of both girls.

4. Before applying the noise reduction in this particular image we will change the **Opacity** on the Layers Palette to 50% then click **Apply**.

5. Next click on the **Background** button on the Dfine Selective 1.0 Palette and again note that there is a new layer created with a layer mask and the cursor is again automatically a brush tool.



Figure 2: Dfine Selective 1.0 Palette

Selectively Reducing Noise in an Image

6. Brush in the background area on the left and right side of the image to minimize any digital noise that might be present. Also, note the noise in the hair on the girl on the right side of the picture. By brushing the noise reduction directly on the hair, the quality of the image is considerably increased. (See Figure 3)

7. Go to the Layers Palette and again change the Opacity to 50%. Then click **Apply**.



Figure 3: Example of noise reduction on hair



Final Image