

Nik Color Efex Pro™ 2.0 Lesson

Using the Skylight Filter

An easy way of adding warmth and contrast to enhance any photograph



Before

After

Using the Skylight Filter

An easy way of adding warmth and contrast to enhance any photograph

With all of the creative, colorful and special effect choices located within Nik Color Efex Pro 2.0, it is easy to overlook the simple enhancement filters designed to render an image like their glass counterparts when attached to a camera's lens. The Skylight Filter is just such a filter. The simplicity of using this filter and the benefit received from applying it to an image makes it one of the most useful tools in the photographer's assortment of filters.

As with all the filters in Nik Color Efex Pro 2.0, the Skylight Filter can be applied to the entire image or selectively to a specific area. And based on the filter being applied on a new layer within Photoshop, the option of changing its opacity is always available to the user.

1. Launch Adobe® Photoshop® (or any other Adobe Photoshop plug-in compatible image editing application). The Nik Color Efex Pro 2.0 Selective Tool should appear on the screen when the application as been loaded. (See Figure 1) If this does not appear go to **File>Automate>Nik Color Efex Pro 2.0 Selective...**

2. Click **File>Open** to open the desired image. In this example we are using a commercial stock image by Michael A. Keller for a beauty and health series. (See Figure 2)

Accessing the filters:

Nik Color Efex Pro 2.0 filters are found within the Selective Tool palette and are arranged in alphabetical order and may be easily accessed. (See Figure 3)



Figure 1: Nik Color Efex Pro 2.0 Selective Tool

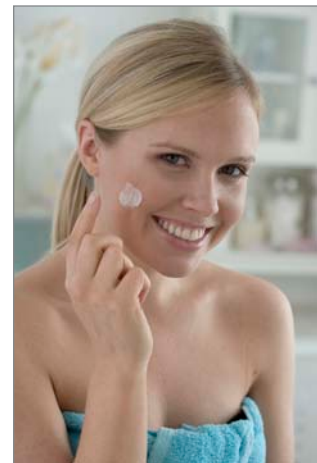


Figure 2: Original Image



Figure 3: Close-up of Selective Tool palette

Using the Skylight Filter

3. Click on the **S-Z** tab located at the top of the Selective Tool palette and select the Skylight Filter. The preview window will appear with the image. (See Figure 4)

4. Click and move the slider left and then to the right until the desired amount of the filter is achieved. Skin tone is usually the most important element to control in a photograph of this type. In order to make it easier to see the “before and after” images in the preview window, click on the **Mode** button then click on the double vertical graphic. This will show the image before, on the left side, and after on the right. (See Figure 5)

5. For a closer look at the image in the before and after modes, simply click on the zoom ratio in the upper right hand corner of the window and zoom in to the desired magnification. (See Figure 6)

To make the comparison easier, Nik Color Efex Pro 2.0 has a handy tool built into the software. After zooming in to the same amount of magnification on each of the two preview images, click and drag the hand move tool to move to the desired area of the image in either of the windows. Then, simply click and drag that image to the other window. You will see the exact same area of the face in both windows.

6. After optimal settings have been achieved, click OK to save the setting and close the Skylight Filter Preview window. The Skylight Filter effect has NOT yet been applied to the image; the image will appear in its original state in the Photoshop user interface. In addition, the Selective Tool palette is still active within the workspace.

7. Click the **Fill** button located in the Selective Tool palette to apply the Skylight Filter to the entire image.



Figure 4: Skylight Filter Preview window



Figure 5: Double vertical image mode



Figure 6: Ratio

Using the Skylight Filter

8. Click the **Erase** button located in the middle area of the Selective Tool to erase the filter effect (using the brush) from additional areas of the image, as desired. After optimum effect is achieved, click **Apply**.

9. Click **File>Save As** to save the image with the appropriate description of the effects applied. Saving the image with Save As enables retention of the original unadjusted image.



Original Image

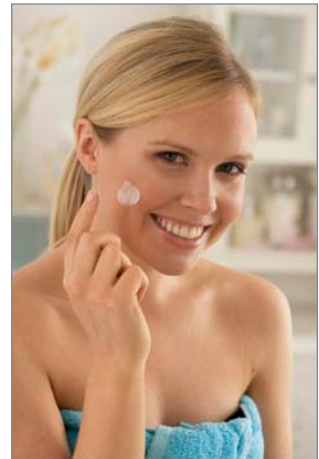


Image with Skylight filter