

Nik Color Efex Pro™ 2.0 Lesson

Using the Pro Contrast Filter

Maximizing image quality while controlling color cast



Before



After

Using the Pro Contrast Filter

Maximizing image quality while controlling color cast

The Pro Contrast filter can be described as one of the top three filters used by working professional photographers. It can be used to enhance an otherwise finished image by offering a slight color cast removal tool as well as a professional contrast control feature designed to optimally adjust the exact amount of contrast based on image content.

1. Launch Adobe® Photoshop® (or any other Adobe Photoshop plug-in compatible image editing application). The Nik Color Efex Pro 2.0 Selective Tool should appear on the screen when the application has been loaded. (See Figure 1) If this does not appear go to **File>Automate>Nik Color Efex Pro 2.0 Selective...**

2. Click **File>Open** to open the desired image. For this example we are using a scenic view of New York City taken from the Empire State Building. (See Figure 2)

Accessing the filters:

Nik Color Efex Pro 2.0 filters are found within the **Selective Tool** palette and are arranged in alphabetical order and may be easily accessed. (See Figure 3)

3. Click the **OI-R** tab located at the top of the **Selective Tool** palette and select the **Pro Contrast** filter. The **Preview** window will appear with the image displayed. (See Figure 4)

4. Click and slide the **Correct Color Cast** slider to the left

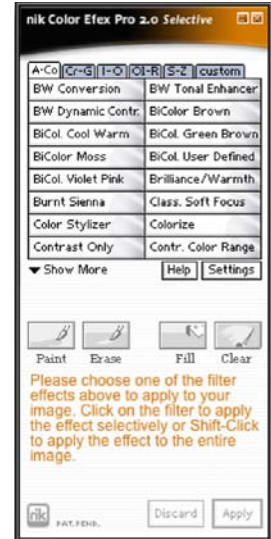


Figure 1: Nik Color Efex Pro 2.0 Selective Tool



Figure 2: Original Image before application of Pro Contrast filter



Figure 3: Close-up of Selective Tool palette

Using the Pro Contrast Filter

and then to the right to find the desired effect. For this image the Color Cast slider is set to 80%. This removes any cool tones or blue color cast in the image. Also, the **Correct Contrast** slider is moved left and then to the right for the desired amount of contrast. 70% is ideal for adjusting the contrast in this particular image. (See Figure 5)

5. After adjusting the correct amount of color cast and contrast, click on the **MODE** button, then click on the double horizontal graphic in order to display both before and after images in the **Pro Contrast Preview Window**. (See Figure 6)

6. At the top left area of the **Pro Contrast Preview Window** are the **Basic** and **Advanced** selections. By clicking on the Advanced selection a new display appears. This Advanced Window allows the user to protect the highlights and/or shadows in an image.

As the **Protect Highlights** slider is moved to the right you can see the effect in the preview window. The highlights in the upper right area in the sky become “protected” or controlled from any influence during the contrast or color cast changes. In this image we determined that the **Protect Highlights** and **Protect Shadows** sliders work best in the 92% and 25% positions, respectively. (See Figure 7)

7. After analyzing the image and final controls are made click **OK** on lower right corner of the Pro Contrast Preview Window.

8. Click the **Fill** button and then click **Apply**. The Pro Contrast Filter has now been applied as a new layer within Photoshop.

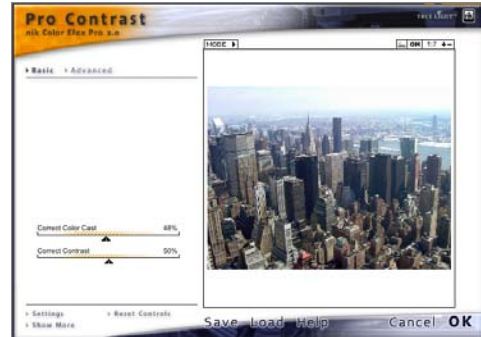


Figure 4: Pro Contrast Preview window

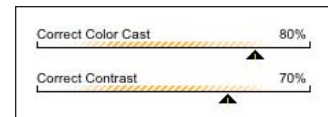


Figure 5: Pro Contrast controls

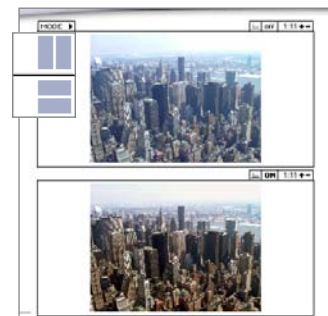


Figure 6: Double Horizontal Mode

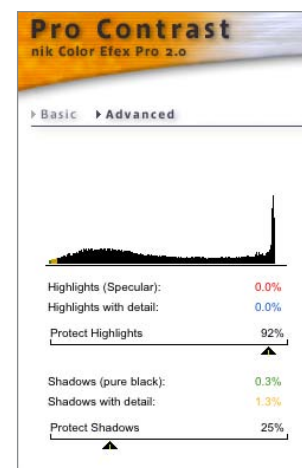


Figure 7: Advanced slider controls