

## Nik Color Efex Pro™ 2.0 Lesson

### Using the Midnight Filter

Creating drama and directing the viewer's attention with special effects



Before

After

## Using the Midnight Filter

Creating drama and directing the viewer's attention with special effects

The Midnight filter is available in Nik Software's Complete and Select Editions, and as with all Nik Color Efex Pro 2.0 filters, it can be applied on an entire image with one click or it can be selectively applied depending upon the desired effect. Often combined with Photoshop's Gradient Tool, the Midnight filter creates the illusion of a photograph taken at night and emulates a dark, moody feeling while softening image details.

1. Launch Adobe® Photoshop®. The Nik Color Efex Pro 2.0 Selective Tool should appear when the application has been loaded. (See Figure 1) If it does not appear, click on **File>Automate>Nik Color Efex Pro 2.0 Selective...**

2. Click **File>Open** to open the desired image. In this example we are using a woman photographed amidst a deep forest or woods. (See Figure 2)

### Accessing the filters:

Nik Color Efex Pro 2.0 filters are found within the **Selective Tool** palette and are arranged in alphabetical order and may be easily accessed. (See Figure 3)

3. Click the **I-O** tab located at the top of the **Selective Tool** palette and select the Midnight filter. The Midnight filter **Preview** window will appear with the image displayed. (See Figure 4)

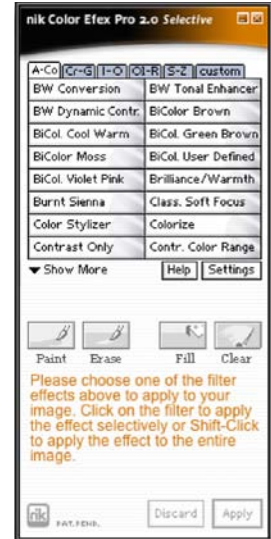


Figure 1: Nik Color Efex Pro 2.0 Selective Tool



Figure 2: Original Image



Figure 3: Close-up of Selective Tool menu

# Using the Midnight Filter

4. Click and slide the **Blur** slider and observe the changes that occur. The Blur slider controls the intelligent soft-focus effect that is applied to the image.

5. Click and slide the **Contrast** slider to the right and then to the left and observe the changes that occur. The Contrast slider controls the overall contrast range of the image.

6. Click and slide the **Brightness** slider and observe the changes that occur. The Brightness slider controls the overall lightness of the image.

7. Click and slide the **Color** slider in order to adjust color and saturation of the filter as needed.

8. Adjust the sliders accordingly keeping in mind that the “Midnight” filter effect will eventually be applied to the background only. You may ignore how the effect is altering the key figure and focus only on how the filter is affecting the background.

9. After optimal settings have been achieved, click **OK** to save the setting and close the **Midnight Filter Preview** window. The Midnight filter effect has NOT yet been applied to the image; the image will appear in its original state in the Photoshop user interface. In addition, the Selective Tool palette is still active within the workspace.

10. Click the **Fill** button located within the **Selective Tool** palette to apply the Midnight filter to the entire image. (See Figure 5)

11. Select the **gradient** tool from the Photoshop tool menu and click the **Radial gradient** button located on the menu bar. Utilizing the gradient tool will enable a smooth transition from the original image to the stylized, darkened

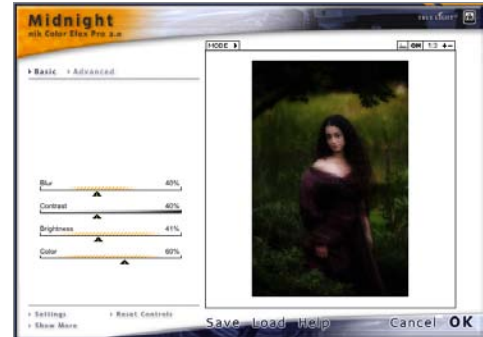


Figure 4: Midnight Preview window

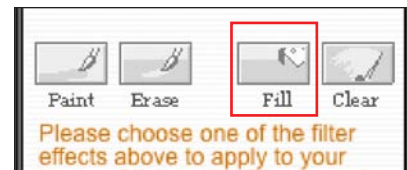


Figure 5: Select Fill from the Selective Tool palette



Figure 6: “Fill” image with Midnight filter’s effect

## Using the Midnight Filter

image. (See Figure 7)

12. With the gradient button selected, click and drag the mouse or pen from the center of the image and up towards the top. It's OK to drag the mouse or Wacom pen off of the image area. The key subject will become brighter, while the background retains the stylized, darkened effect.

13. Click the Photoshop **Paintbrush** icon in the tool palette and click the **Erase** button located in the middle area of the **Selective Tool** to erase the filter effect from additional areas of the image, as desired. After optimum effect is achieved, click **Apply**. Click **File>Save As** to save the image with the appropriate description of the effects applied. Saving the image as **Save As** enables retention of the original unadjusted image.

*Note: It is suggested to use a soft brush tool setting (i.e. hardness 0%) Also, setting the opacity between 20 and 30% offers a subtle brush or erasure of the effect on any desired areas of the image. Wacom pen tablet users can easily control softness and hardness with the pressure sensitive nature of the Wacom system.*

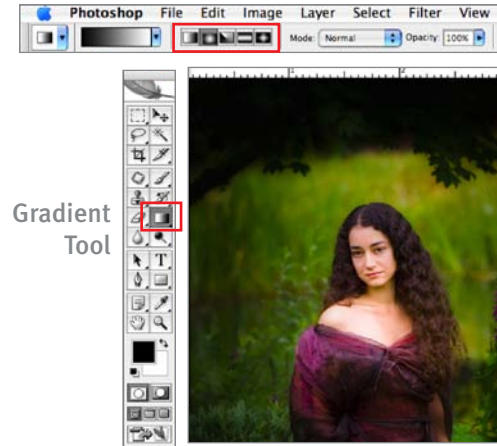


Figure 7: Midnight filter with Radial Gradient tool