

Nik Color Efex Pro™ 2.0 Lesson

Using the Brilliance/Warmth Filter

Easy-to-apply filter greatly enhances image quality with subtle changes



Before



After

Using the Brilliance/Warmth Filter

Easy-to-apply filter greatly enhances image quality with subtle changes

The Brilliance/Warmth filter has many uses for enhancing digital photographs; from adding impact to a traditional portrait photograph, to adding a feeling of depth to a scenic image. This lesson demonstrates how the Brilliance/Warmth Filter can be applied to an image using the Nik Color Efex Pro 2.0 Selective Tool. Please note that when any of the filters found in Nik Color Efex Pro 2.0 are opened in Photoshop, a new layer is created and the layer mask can be modified when the **Fill** or **Paint** modes are selected.

1. Launch Adobe® Photoshop® (or any other Adobe Photoshop plug-in compatible image editing application). The Nik Color Efex Pro 2.0 Selective Tool should appear on the screen when the application as been loaded. (See Figure 1) If this does not appear, go to **File>Automate>Nik Color Efex Pro 2.0 Selective...**

2. Click **File>Open** to open the desired image. In this example we are using a beautiful and colorful butterfly image.

Accessing the filters:

Nik Color Efex Pro 2.0 filters are found within the **Selective Tool** palette and are arranged in alphabetical order and may be easily accessed.

3. Click the **A-CO** tab located at the top of the **Selective Tool** palette and select the Brilliance/Warmth filter. The **Preview** window will appear with the image displayed. (See Figure 2)

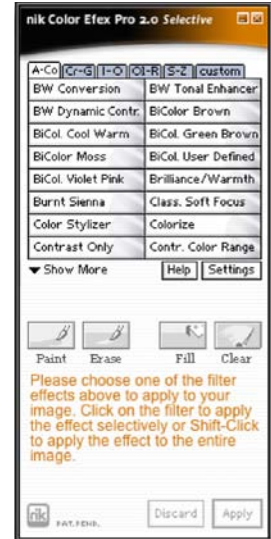


Figure 1: Nik Color Efex Pro 2.0 Selective Tool



Original image before application of Brilliance/Warmth

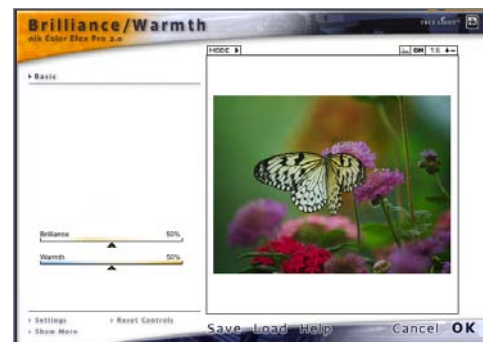


Figure 2: Brilliance/Warmth Preview window

Selectively Using Brilliance/Warmth Filter

4. Click on the **Brilliance** slider and begin to move the slider to the left and then to the right until the desired amount is achieved. In order to more easily compare the amount of filter being applied, click on the **MODE** button and select the double horizontal graphic which will then reveal the before and after in the same preview window. (See Figure 3)

5. Click and drag the **Warmth** slider to the left and then to the right and notice the color shift in the preview window. Once the optimum adjustments have been made from both of the adjustment sliders, click **OK**. (See Figure 4)

6. A new layer has been created in Photoshop and the choice is to **Paint** the enhancement on the image or **Fill** the entire image with the selected enhancement. In this example we will click on the **Fill** button in the middle area of the Nik Color Efex Pro 2.0 Selective Tool palette, then click **Apply**. (See Figure 5)



Figure 3: Double horizontal mode



Figure 4: Brilliance/Warmth adjustment sliders



Figure 5: Select Fill from the Selective Tool palette