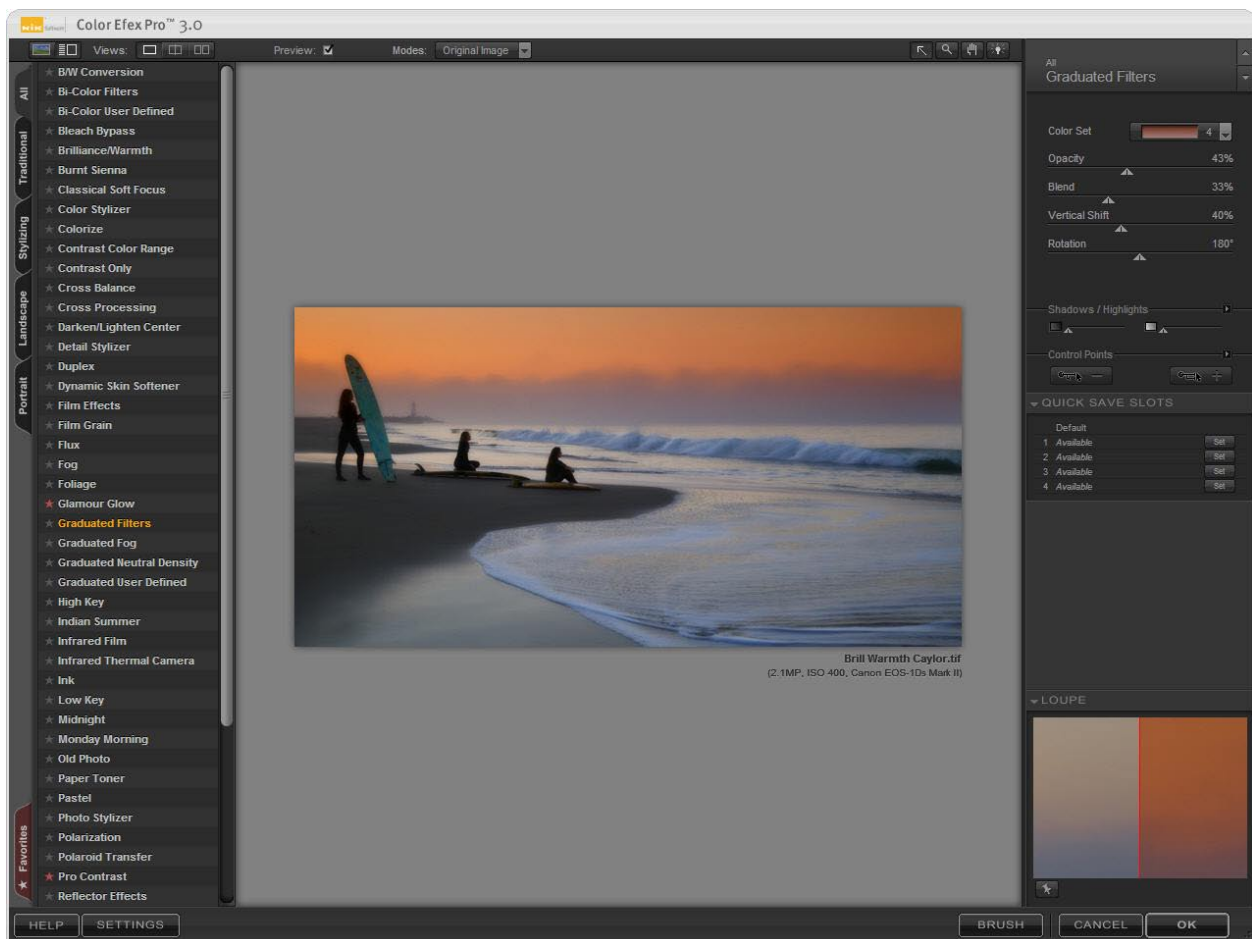




Color Efex Pro™ 3.0 Lesson

Enhancing the Sky Using the Graduated Filters

The Graduated Filters in Color Efex Pro 3.0 allow you to blend color into a portion of an image, with a gradual transition to the original image.



Color Efex Pro™ 3.0 Lesson

Enhancing the Sky Using the Graduated Filters



To apply the Graduated Filters to the image, click on the Graduated filters from the Selective Tool or open Color Efex Pro 3.0 from the Filter menu and then select the Graduated Filters from the Filter List on the left.

Tip: Once inside the Color Efex Pro 3.0 interface, you can hide the Filter List by simply clicking on the Show Image Only button located at the top left corner of the interface (Fig. 1). Clicking on this will provide more room to work with an image.

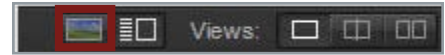
After you click on the Graduated Filters, the filter effect will be applied to the Image Preview automatically. The filter effect that is displayed will be the first option under the Color Set in the filter controls area. You may select from the various graduated filter groups such as Blue, Olive, Coffee and Orange (Fig. 2).

To see a preview of each graduated filter effect applied to the image, scroll through each of the filter effects to find the desired effect.

To modify or adjust the application of this filter on the image, go to the filter control area (Fig 3). In the filter control area, there are four controls: Opacity, Blend, Vertical Shift, and Rotation.

Opacity – Controls the overall strength of the filter. Move the slider to the right to increase the filter effect on the image or move the slider to the left to decrease the filter effect applied on the image.

Blend – Controls the size of the blend between the two colors in the filter. Move the slider to the right to increase the blending effect on the image or move the slider to the left to decrease the blending effect applied on the image.



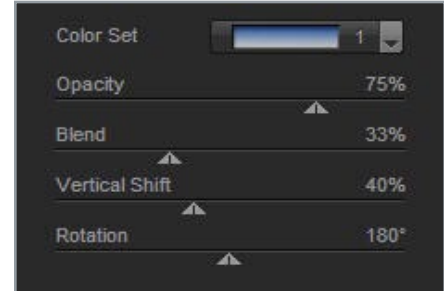
(Figure 1)

Show Image Only



(Figure 2)

Show Image Only



(Figure 3)

Filter Control

Color Efex Pro™ 3.0 Lesson

Enhancing the Sky Using the Graduated Filters



Vertical Shift - Controls the placement of the filter's horizon. Move the slider right to left to determine whether to place the horizon level upward or downward in the image.

Rotation – Controls the angle of the filter's horizon. Move the slider right to left to suit the landscape or terrain that is photographed in the image.

Once the optimum adjustments have been made using the filter controls, you may simply click on the OK button (Fig 4) at the bottom of the interface and the filter will be applied globally throughout the image.



(Figure 4)

Filter Control