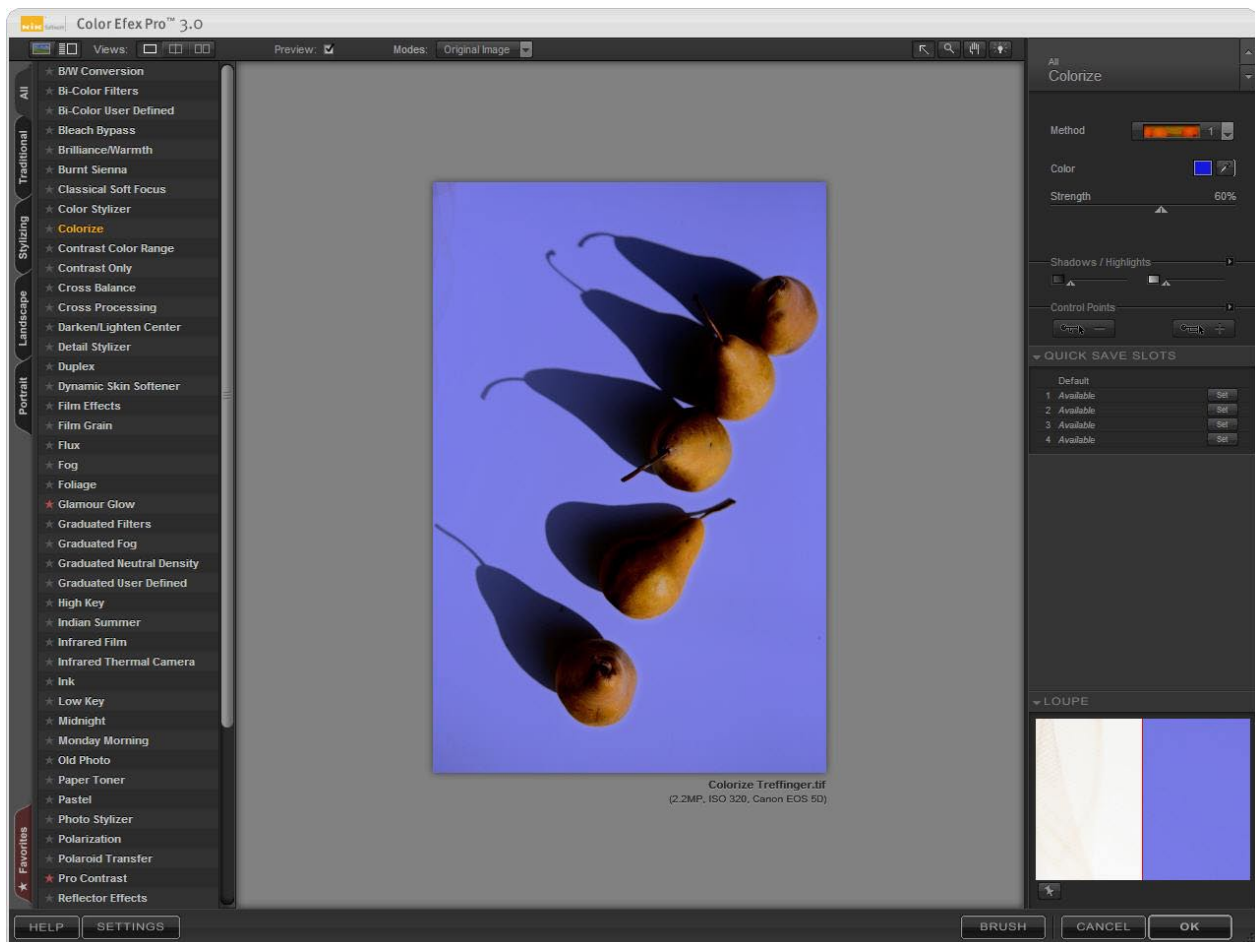




Color Efex Pro™ 3.0 Lesson

Discover Selective Enhancements Empowered by U Point® Technology

In this lesson learn how to use U Point powered Control Points to specify where a filter effect is applied without using complicated selections or layer masks.



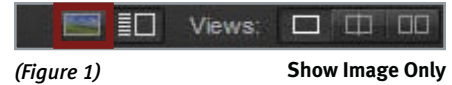
Color Efex Pro™ 3.0 Lesson

Discover Selective Enhancements Empowered by U Point® Technology



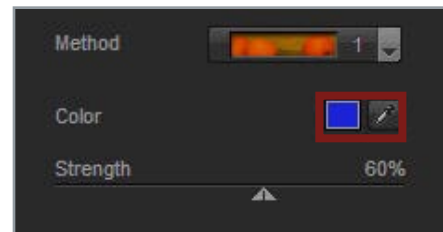
To apply the Colorize filter to the image, click on the Colorize Filter from the Selective Tool or open Color Efex Pro 3.0 from the Filter menu and then select Colorize from the Filter List on the left.

Tip: Once inside the Color Efex Pro 3.0 interface, you can hide the Filter List by simply clicking on the Show Image Only button located at the top left corner of the interface (Fig. 1). Doing this will provide more room to work with an image.



(Figure 1)

Show Image Only



(Figure 2)

Eye Dropper

To modify or adjust the application of this filter on the image, go to the filter control area. In the filter control area, you can make any adjustments to the filter effect that you feel best fit the image. There are three controls for the Colorize Filter; Method, Color and Strength (Fig.2).

Method - Controls the relationship between the original colors in the image and the color being added to the image.

Color - Lets you select a color to add to the image. To select a color for this control you may either use the eyedropper within the active image or click on the color patch using the color picker in your image editing application.

Strength - Controls the degree to which you want to apply the filters. Adjust the filter controls until you find the optimum levels.

Use Control Points to Remove the Filter Effect

Click the 0% Control Point button (Fig. 3) and then place the Control Point on an area you want to remove the Colorize filter effect from. This Control Point sets the opacity level at 0%. When the Control Point is placed, it will read the pixel value of that object and protect any objects similar in pixel values within the selected range.



(Figure 3)

0% Control Point

Color Efex Pro™ 3.0 Lesson

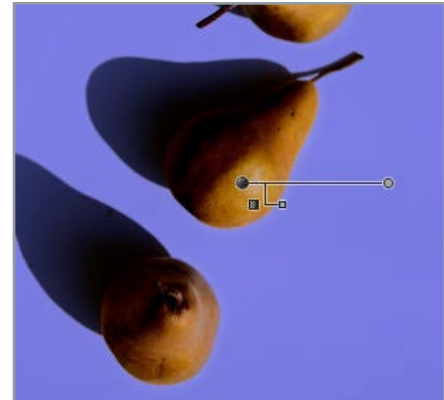
Discover Selective Enhancements Empowered by U Point® Technology

The top slider of the Control Point is the size slider. Move the slider from right to left to include the area where the objects of similar pixel value are contained within the image. The bottom slider is the opacity level, which is set at 0%.

As you can see in our example, the background in the image is still purple (Fig. 5). By placing a minus Control Point on one of the pears, the purple color from the Colorize filter does not affect the color of any of the pears. The pears remain with their original color.

To see a before and after effect of the filter applied to the image, click on and off the Preview checkbox (Fig. 6) or use the View tools to see a Split Preview or a Side-by-side Preview (Fig 7).

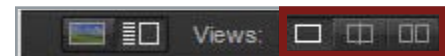
Click the OK button at the bottom of the interface to apply the filter effect on the image. Color Efex Pro 3.0 creates a new layer in the Layers palette (Fig. 8).



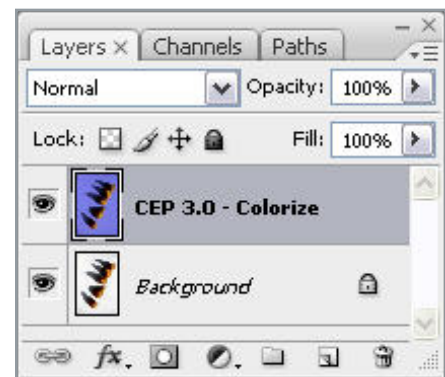
(Figure 5) Minus Control Point



(Figure 6) Preview



(Figure 7) Views



(Figure 8) New Layer