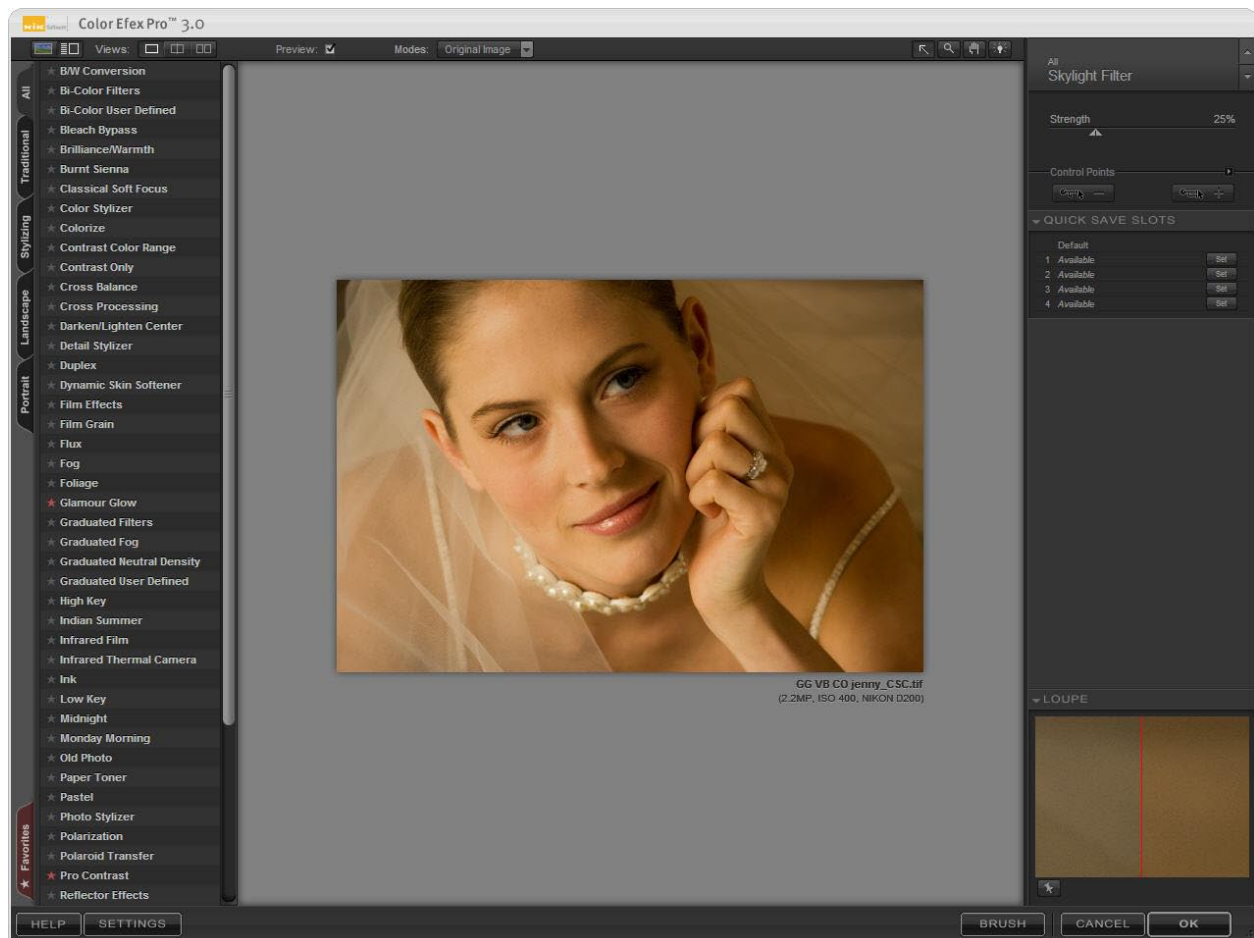




## Color Efex Pro™ 3.0 Lesson

### Creating Beautiful Skin with the Dynamic Skin Softener

The Dynamic Skin Softener creates soft, delicate skin in an image without affecting other objects .



# Color Efex Pro™ 3.0 Lesson

## Creating Beautiful Skin with the Dynamic Skin Softener



To apply the Dynamic Skin Softener to the image, click on the Dynamic Skin Softener from the Selective Tool or open Color Efex Pro 3.0 from the Filter menu and then select the Dynamic Skin Softener from the Filter List on the left.

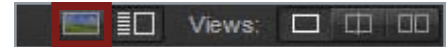
**Tip:** Once inside the Color Efex Pro 3.0 interface, you can hide the Filter List by simply clicking on the Show Image Only button located at the top left corner of the interface (Fig. 1). Clicking on this will provide more room to work with an image.

There are five controls for the Dynamic Skin Softener the Skin Color picker, the Color Reach slider, the Small Details slider, the Medium Details slider, and the Large Details slider (Fig. 2). When you are making adjustments to the filter, it is recommended to zoom into 100% to precisely see the effect of the Dynamic Skin Softener. A quick and easy way of zooming in to the 100% view is to double-click in the Image Preview area, and double-clicking again will zoom back out to the Zoom to Fit view.

### The Filter Controls in Detail

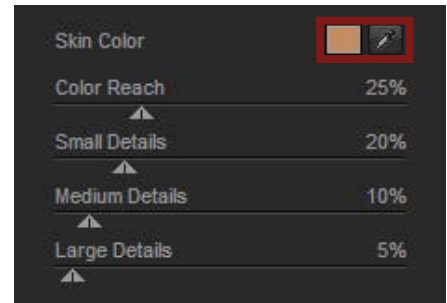
The Skin Color picker lets you select the color of the skin tone using either the eyedropper on the active image or click on the color patch and use the default color picker. Select the color of skin in the image that you would like to soften.

The Color Reach slider controls the range of affected colors. Low values will only soften the hue and shade selected, and increasing the slider to the right will expand the range to similar colors beyond the color selected.



(Figure 1)

Show Image Only



(Figure 2)

Color Picker

# Color Efex Pro™ 3.0 Lesson

## Creating Beautiful Skin with the Dynamic Skin Softener



**Note:** With the Color Reach slider at 100%, the Dynamic Skin Softener effect will be applied to the entire image—use Control Points to define the areas that require softening.

The Small Details slider controls the amount of softening applied to small details like very fine lines or wrinkles on a face.

The Medium Details slider controls the amount of softening applied to medium details like medium sized pores or slightly noticeable scars or marks on the skin.

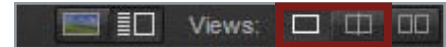
The Large Details slider controls the amount of softening applied to large details like larger pores and more pronounced scars or marks on the skin.

In Color Efex Pro 3.0 you can view the filter effect being applied to your image, go to Views (located at the top left corner of the interface) and select either Split Preview or Side-by-side Preview (Fig. 3). These previews allow you to view the image before and after the filter controls were applied. You may also click the Rotate Preview button to alternate between a vertical and horizontal preview layout (Fig. 4).

Once the optimum adjustments have been made using the filter controls, click the OK button at the bottom of the interface and the filter will be applied globally throughout the image. If you wish to apply the filter effect on certain selected areas of the image, click on the Brush button to selectively apply the filter effects on the image (Fig. 5).

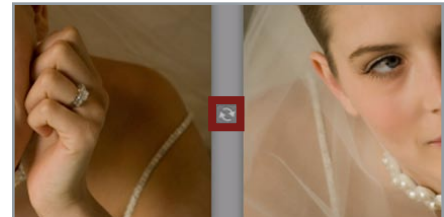
From the Selective Tool, select Paint (Fig. 6) and begin painting the Dynamic Skin Softener filter on the image.

Once the optimum filter effect has been applied to the image, click the Apply button in the Selective Tool.



(Figure 3)

Views



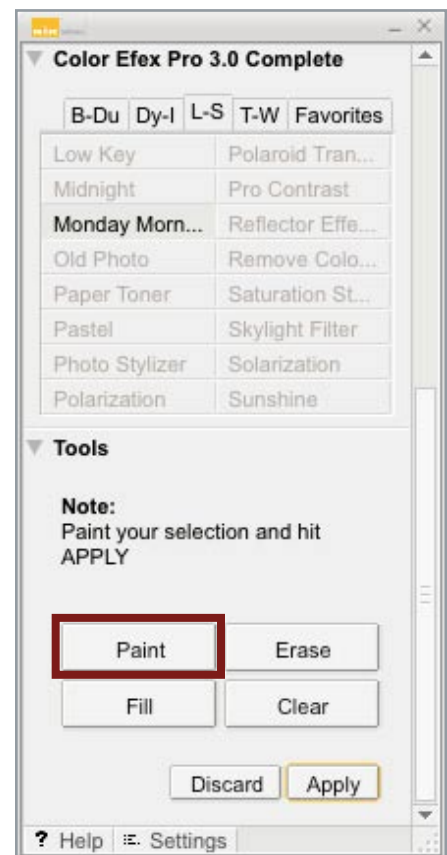
(Figure 4)

Rotate Preview



(Figure 5)

Brush button



(Figure 6)

Selective Tool